

Decision Argument

Drugs are a decision.

Diabetes is a disease.

Strong enough motivation

and the drunk won't drink.

... can't scare a diabetic

into adjusting blood sugar.



1

Disease Argument

Disease *or* Decision?

Disease **OF** Decision



2

Disease Model

Disease Model = Causal Model

Organ



Defect



Symptoms



3

Disease Model

Pain, Deformity,
Disability
↓
Femur
↓
Fracture

Pancreas
↓
No Insulin
↓
Blindness,
Numbness,
Wounds,
Worse



4

Disease Model

Organ
↓
Defect
↓
Symptoms

Brain?
Liver?
↓
???
↓
Bad
Behavior



5

Rats on Crack

Olds and Milner (1954)

Monkey with the Midbrain = Motivation

Rats choose drugs
over life-sustaining necessities



6

Rats on Crack

Drugs

Feed

Fight or Flight

Sex

Protect

Solution to Starvation = Drugs
Solution to Relieving Pain = Drugs



7

Significance of the Rats

Addiction is more complicated than
moral failure, weakness of
character, or willpower.



8

New Discoveries in Neuroscience

Dopamine - The Great Reward

Broccoli ?

Chocolate Cake ?

Sex ?



9

New Discoveries in Neuroscience

Midbrain meets the Frontal Cortex
imaging & the addicted brain

The Angel and The Devil



10

Disease or Decision?

The addict has no choice not to crave.



11

Stats: Substance Use Disorders

192 Americans die daily from drug overdose
More than 72,000 Americans in 2017

Addiction kills more Americans than car crashes
or gun violence

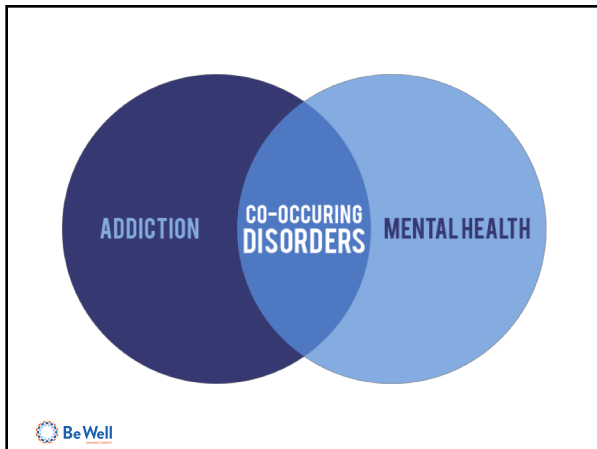
22 Million people are addicted each year

90% of them Do Not receive treatment



12





Decision Argument

Depression is a decision.

Diabetes is a disease.

Strong enough motivation

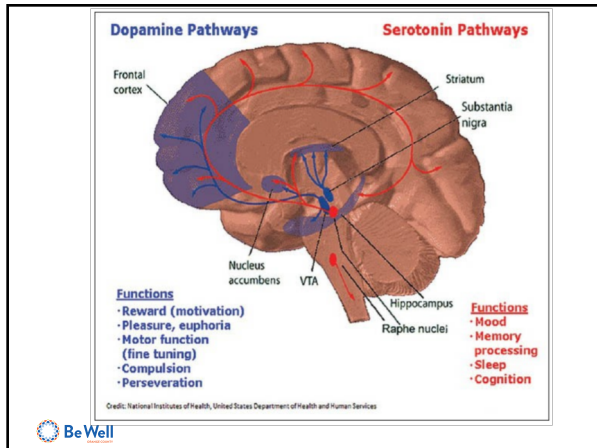
and the depressed will snap out of it.

... can't scare a diabetic

into adjusting blood sugar.



15



Disease or Decision?

Depression offers no alternative to hopeless.

Stats: Adult Mental Health

1 in 5 have Mental Illness in a given year

Depression 1st cause of disability globally

60% of adults with mental illness annually Do Not receive treatment



Stats: Youth Mental Health

20% of youth have mental health disorder

50% of all lifetime cases of mental illness
begin by age 14 and 75% by age 24

8-10 years is avg time from onset to treatment

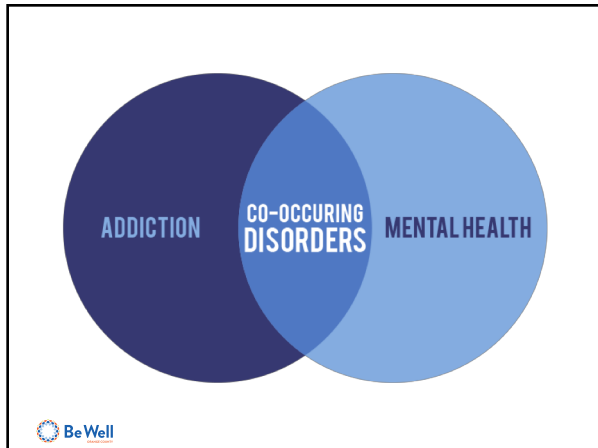
50% of youth (8-15) w/ mental illness annually
Do Not receive treatment

Suicide is the 3rd leading cause of death
in youth ages 10 - 24



20





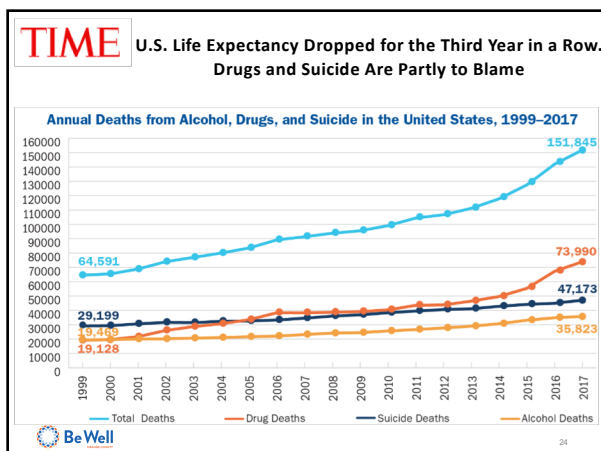
Dual Diagnosis

Nearly 8 Mil. have Co-Occurring Disorders

Less than 10% received proper treatment
- both substance use and mental health

More than 50% received no treatment





Barriers

Stigma

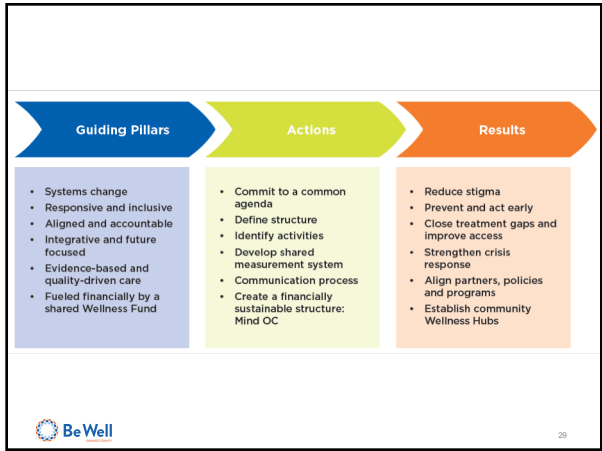
Cost

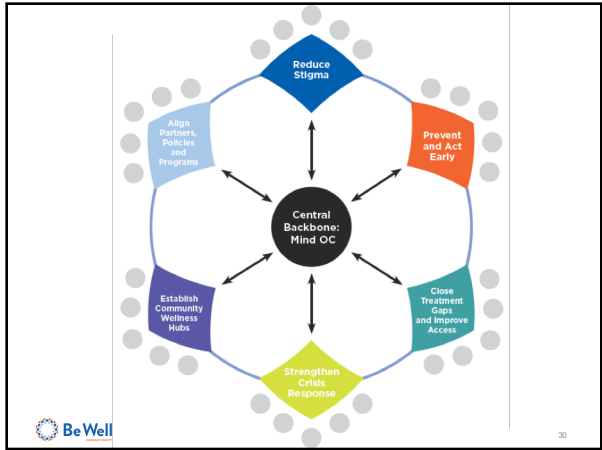
Don't Know Where To GO

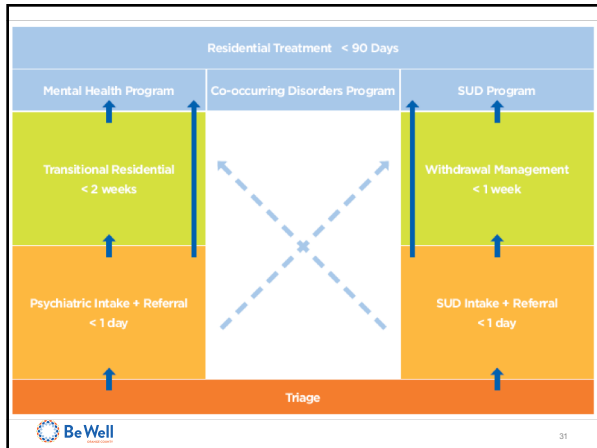














Prayer of St Francis of Assisi
 Lord, make me an instrument
 of Your peace;
 Where there is hatred,
 let me sow love;
 Where there is injury,
 pardon;
 Where there is error,
 truth;
 Where there is doubt,
 faith;
 Where there is despair,
 hope;
 Where there is darkness,
 light;
 And where there is sadness,
 joy.

The BeWell logo is in the bottom left corner.

Lord, make me an instrument
of Your peace;

Diagnostic Criteria: Depression

Where there is **hatred**,

let me sow love;

Where there is **injury**,

pardon;

Where there is **error**,

truth;

Where there is **doubt**,

faith;

Where there is **despair**,

hope;

Where there is **darkness**,

light;

And where there is **sadness**, ... Loss of Interest & Pleasure
joy.



Lord, make me an instrument
of Your peace;

Our Mission is to...

Where there is **hatred**,

let me **sow love**;

Where there is **injury**,

pardon;

Where there is **error**,

truth;

Where there is **doubt**,

faith;

Where there is **despair**,

hope;

Where there is **darkness**,

light;

And where there is **sadness**,

joy.



...Our Mission is Clinical & Spiritual

